

# CONVEY HE-260 and HE-500



## ELECTRIC SCREED PUMP

### TECHNICAL DATA:

MODEL	Ref N°	Engine	Compresor recomendado	Vessel	Distance	Height	Dimensions LxWxH (mm)	Weight
HE 260	0198200	7.5 kW	4,6 m <sup>3</sup> /min.	260 L.	100 m*	900 mm	2750 x 1160 x 1100	730 Kg.
HE 260 T	0198201					420 mm	3300 x 1160 x 2280	860 Kg.
HE 260 TP	0198202					420 mm	3300 x 1160 x 2370	920 Kg.
HE 500	2002016	18 kW	10 m <sup>3</sup> /min.	500 L.		1.040 mm	3680 x 1300 x 1300	1.125 Kg.
HE 500 P	2002026					420 mm	3680 x 1300 x 2150	1.350 Kg.

\* depending on compressor



# CONVEY HE-260 and HE-500 / Electric Screenshot Pump



## CHARACTERISTICS and SERIAL EQUIPMENT:

- Three phase screed pump 400 v.
- Central greasing system.
- In skip and scraper version including radio control.
- Low filling height and safety system on vessel.
- TÜV certified vessel with 3 1/2" cleaning outlet.
- Protection hood for gearbox in models he 260.
- High quality paint following norm ASTM B 117/85.
- Instruction manual and parts book.
- CE certificate and warranty certificate.
- Tools and cleaning tools.

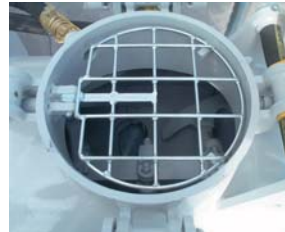
## RECOMMENDED EQUIPMENT (on order):

- Ref. 38312 Transport hose 65 mm (20 m) with couplings.
- Ref. 38314 Transport hose 65 mm (20 m) with coupling for tripod.
- Ref. 48100 Cable (15 m) remote control "Convey 260".
- Ref. 36000 Electric cable 5x2'5 (25 m) with plug.
- Ref. 36001 Electric cable 5x2'5 (50 m) with plug.
- Tripod.

Always use original spare parts and tools. Due to continuous improvement and development all machines can be modified without previous advice.



Remote control for Scrap



Grill safety system



Automatic greasing system



Easy to operate.



New safety system



Proteccion hood

Our distributor: