



PISTON PUMP

TECHNICAL DATA:

Art. 2002024 Art. 2002008 Art. 2002009 Art. 2002007
 Electric one piston Electric double piston Diesel one piston Diesel double piston

Motor	Electric	Diesel
Motor Power	11 Kw	19 Kw
Hopper Volume	170 dm ³	
Output		
Pumping distance	horizontal 300 m, vertical 45 m	
Tension	400V, 50Hz	
Length	3.000 mm	
Height	1.500 mm	
Wide	1.600 mm	1.730 mm
Weight	900 kg	950 kg

TECHNICAL DATA:

		One piston	Double piston
Pumping output	1 Speed	1,5 m ³ /h (25 l/min)	3,0 m ³ /h (50 l/min)
	2 Speed	3,0 m ³ /h (50 l/min)	6,0 m ³ /h (100 l/min)
	3 Speed	4,8 m ³ /h (50 l/min)	9,6 m ³ /h (160 l/min)
max. grain size		8 mm	

P5 / Piston pump.



FEATURES:

- Electric or Diesel piston pump for traditional mortar.
- Pumps material by piston, sprays and injects all sorts of traditional mixes.
- Sprays micro concrete.

FEATURES:

- Suitable for all sorts of traditional mortar mixes.
- Pumps the material without interruptions and low wear.

ADVANTAGES:

- Max. Output in difficult circumstances.

SERIAL EQUIPMENT:

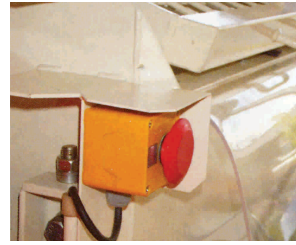
- Diesel or Electric Motor (depending on model).
- 2 Cleaning balls.
- Tool Kit.
- Warranty Certificate.
- CE Certificate.
- Parts book and manual.

RECOMENDED EQUIPMENT: (on order)

- 2 x 15 m mortar hose Dn. 50 mm
- 1 x 5 m mortar hose 35 mm
- 2 x 20 m air hose 13 mm
- Spraygun

SPARE PARTS:

Always ask for original spare parts and tools.
Due to continuous improvement and development all machines can be modified without previous advice



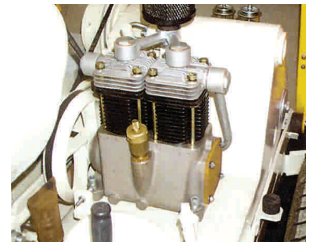
1. Emergency stop



2. Protection system



3. Grill safety system



4. Compressor



5. Electric Version



6. Vibrator



7. Oil tanks easy to fill



8. Complete machine

Our distributor: