

SILOFORM G



SILO CONVEYING SYSTEM

TECHNICAL DATA:

	Ref. 0198026	Ref. 0198028
Rotating motor power	5,5 kW - 400V - 50 Hz	5,5 kW - 400V - 50 Hz
Air output at 2 bars	100	140
Max. overpressure	2,8 bar	2,8 bar
Max. distance	Aprox. 150 m	Aprox. 150 m
Vessel capacity	Aprox. 70 l.	Aprox. 70 l.
Weight of vessel	Aprox. 59 Kg	Aprox. 59 Kg
Dimensions LxWxH (mm)	1.060 x 470 x 530	1.060 x 470 x 530
Total weight	220 Kg	220 Kg

Equipos adicionales para la proyección o amasado de materiales de silo



Ref. 0198040 Utimix C-40



Ref. 0198061 Revocadora Quattro



Ref. 0198002 Revocadora Master

SILOFORM G / silo conveying system



CHARACTERISTIC and SERIAL EQUIPMENT:

- Unit consists of electric compressor, control panel and material pressure vessel
- Avoids all manual process, material loss and the use of bags
- Pumps the material from any non pressure silo with standard connection of Dn 250
- Can be used independant of climate conditions
- Reaches up to 120 and 180 m of transport distance (depending on compressor, hoses and material consistency)
- CE certificate and warranty certificate
- User manual and parts book



RECOMMENDED EQUIPMENT (on order):

- 2 x 25 m transport hose Dn 38
- 50 m sensor hose 3 x 1,5 mm²
- 25 m electric hose 5 x 2,5 mm²
- Electric sensor 42 V - 3 poles
- Insulflation hood



Shows oil level in compressor



Easy access to air filter



+ respects environment
no waste and no material loss
+ profitable:
less manpower = more output



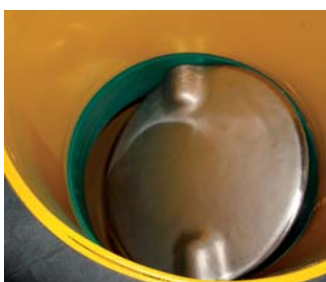
Easy to replace material filter inside vessel



Easy to use control panel



Air pressure meter and safety valve



Automatic or manually operated butterfly valve in pressure vessel



Motor indicates material situation

Always ask for original tools and spare parts. Due to continuous improvement and development all machines can be modified without previous advice.

OUR DISTRIBUTOR: